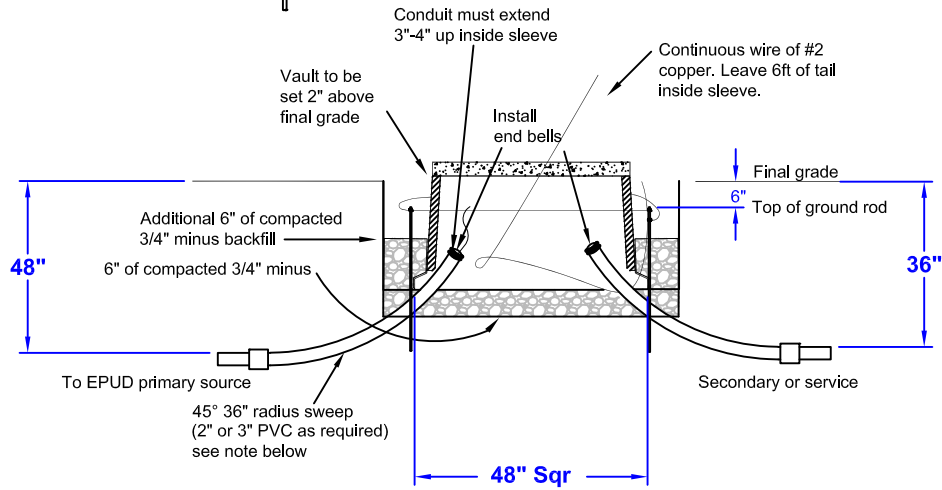
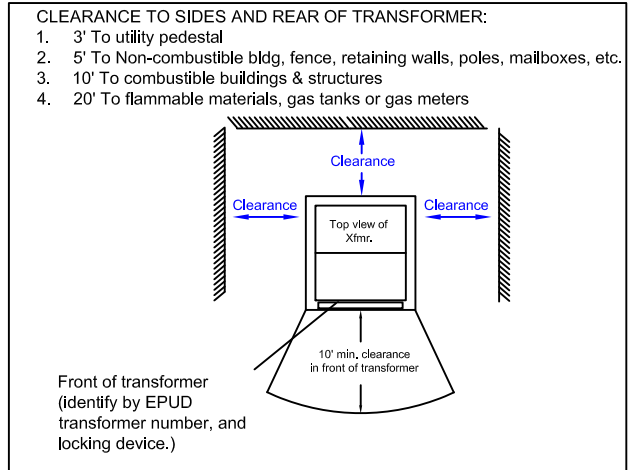
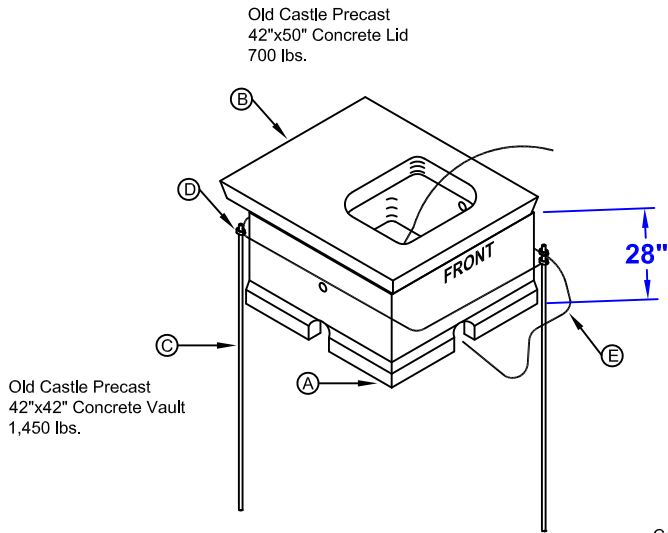


REMEMBER ... CALL 811 BEFORE YOU DIG!

1. Customer's equipment must be approved by a State of Oregon certified electrical inspector.
2. A building permit is required and an electrical inspection must be passed prior to connection.
3. Service will not be energized until installation meets all EPUD specifications.



Note:
End bells shall be installed on all conduits coming into all ground sleeves, concrete vaults, and junction boxes.

ITEM	QUANTITY	DESCRIPTION	PART NUMBER
A	1	Vault Concrete Shrubline Transformer	6728-0202
B	1	Lid Concrete Shrubline Transformer	6728-0306
C	2	Rod Ground Copperweld 5/8" x 8'	6146-0906
D	3	Connector Ground Rod Clamp	4629-0501
E	40 Ft.	Wire Copper Bare #2 Solid Soft Drawn	4518-0507

EMERALD PEOPLE'S UTILITY DISTRICT

Electrical Service Specifications

Single Phase Padmount Shrubline Concrete Transformer/Sleeve