



EPUD PowerLines

Monthly Newsletter of Emerald People's Utility District

December 2009

Contents

FRONT:

How to Read Your Meter
EPUD 2010 Calendar

BACK:

2009 Annual Report
Holiday Office Hours
Winter Energy Saving Tips
Calendar Request Form

How to Read Your Meter

Ever wonder how your electric use is measured? If you're an EPUD Customer-Owner, one of these meters probably lives on or near your home. It keeps a running tally of your electric usage in kilowatt hours (kWh) that's sent electronically to EPUD each month to determine your bill amount. It can also be used as a tool for YOU to track your own electric usage.

Each meter rotates through three different displays:

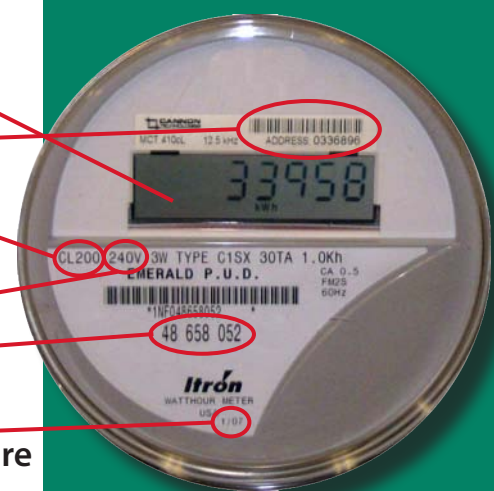
- The first is a segment test which illuminates all fields and tests to make sure the equipment is working properly. This appears as 88888 on your meter.
- The second display shows the meter is working and appears as 00000 or 00001.
- The third display, a five-digit number, is your actual kilowatt usage display. It shows a total accumulation of kWh from the time your meter was installed. When the usage amount reaches 99,999 it resets to 00000.

Curious how a change in your household may be affecting your usage? Measure and track your usage for a few days prior to the change, then measure and track again during/after the change. For example, if your meter reads 54000 on Tuesday at 8am and 54080 at on Thursday at 8am, then your average daily usage is 40 kWh. Have a few guests staying for the holidays? Cooking/cleaning or staying home more than usual? You'll see your average daily usage go up. Fewer people in your household? Buy new energy-efficient appliances, or invest in power strips? You may see your average daily usage go down.

Call EPUD at 541-746-1583 if your meter display is blank but you are still receiving power.

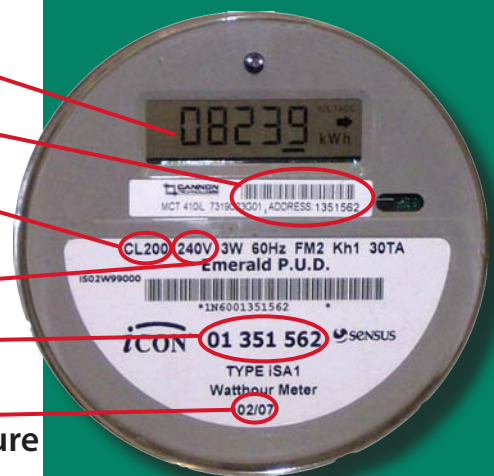
Itron Meter

- Display
- IP Address
- Rated to 200 Amps
- 240 Volts
- Meter Serial #
- Date of Manufacture



Sensus Meter

- Display
- IP Address
- Rated to 200 Amps
- 240 Volts
- Meter Serial #
- Date of Manufacture



Would You Like an EPUD 2010 Calendar?

In order to cut costs and reduce paper waste, EPUD will not automatically send out the EPUD 2010 Calendar to all our Customer-Owners this year. Instead, we will have them available for pickup at our office on Seavey Loop Road in Eugene, and will also distribute them from all the Chamber offices in our District: Eugene, Springfield, Creswell, Cottage Grove, JC-Harrisburg, Veneta. If you would like a calendar mailed to you, please fill out the form on the reverse side and send it in with your bill.





Holiday Hours

EPUD will be closed for the holidays on Thursday-Friday, December 24-25, and Friday, January 1. We will keep normal business hours, 8-5 M-F, on all other days.



Our best to you and yours this holiday season!

Winter Energy Saving Tips

Set your water heater to 120° and save 6-10% on your bill.

Set the fridge temperature to 36-38° and freezer to 0-5°. Set your thermostat at 68°. Each degree you adjust it down saves \$40 a year.



Board of Directors

Penny Jordan, President

933-2867 / bandpjordan@epud.net

Bruce Pilling, Vice President

942-5447 / bpilling@epud.net

Patti Chappel, Treasurer

935-5021 / bushtit@worldnet.att.net

Katherine Schacht

344-0569 / kschacht@epud.net

Bill Tanner

736-0171 / billtanner@epud.net

Board meetings are 2nd & 4th Tuesdays at 5:30 p.m. and 1st Mondays at noon, and are open to the public. Join us!

CONTACT EPUD

33733 Seavey Loop
Eugene OR 97405
(541) 746-1583
(800) 422-4086
fax (866) 284-7953
www.epud.org
webmaster@epud.org



©2009
Emerald People's
Utility District
Printed on recycled paper

EPUD 2009 Annual Report

Financial Overview

2009 was a challenging year for EPUD. The economic downturn caused an 11% decrease in industrial and commercial electricity use, creating a \$650,000 deficit in our expected revenue. And BPA, where we buy 96% of our power, raised its rates by 6.8%. These factors, along with the tight credit market, forced us to implement a 6.4% rate increase in June. We also postponed capital projects, didn't backfill job vacancies, and made other cuts to keep our rates as low as possible. This will continue to be our focus and challenge into the future.

Customer-Driven

We continuously strive to educate and inform our Customer-Owners on the complex issues we face and invite them to be involved in the decision-making process. The Board meets the 2nd and 4th Tuesdays of each month and public participation is encouraged. In addition, customers can serve on one of the Citizens Advisory Committees on rates, finance or resource planning, when space allows. Our website is also a vital tool, with access to information, account tools, and other resources.

Communications

We always seek the best, most effective means to communicate with our Customer-Owners. In addition to local newspapers and radio, we began a monthly edition of our newsletter, *PowerLines*, and launched *Going Emerald*, a biannual newsletter for our wind power customers. We also offer an RSS feed on our website, to keep customers informed of all EPUD news and events, and customers can follow us on Twitter, fan us on Facebook, and view our photos on Flickr. Get connected today!

System Reliability

System reliability and operating efficiency are of the utmost importance to us. We trim trees to lower the number of outages and work tirelessly to update and maintain all 2,000 miles of line in our District. Much work was completed this year to improve Jasper Road and the Bob Straub Parkway, Jeans Road, Mt. Vernon, Harvey Road, an I-5 Interchange, Coburg Road, Parsons Creek, and many other areas.

Community Involvement

EPUD continues to be a strong member of our communities. We participate in the local Chambers of Commerce, sponsor events, participate in parades and festivals, and volunteer. In 2009, EPUD donated solar panels to the cities of Creswell and Veneta, and volunteered over 200 combined hours to various community efforts. In addition, EPUD employees are strong supporters of United Way, Food for Lane County, the American Cancer Society, the Active 20-30 Club, and Kidsports.

Calendar Request Form

YES! I'd like an EPUD 2010 Calendar sent to me!

Name _____

Address _____

City _____ State _____ ZIP _____

Please send _____ 1 Calendar

_____ 2 Calendars

